

GENERAL NOTES:

1. PROPERTY OWNER:

CRMA INVESTMENTS LLC
2. PROPERTY ADDRESS:

NO ADDRESS  
CARPINTERIA, CA 93013
3. ASSESSOR'S PARCEL:

155-170-087 & PORTION 155-170-088
4. AREA:

159.34 ACRES (GROSS) & 23.97 ACRES (NET)
5. ZONING:

AG-II-20 & AG-II-100

SURVEYOR'S NOTES:

THIS MAP REPRESENTS A COMPILATION OF MEASURED BOUNDARY DATA WITH TOPOGRAPHIC CONTOUR INTERVAL DATA FROM SOURCES INCLUDING FIELD SURVEYS BY L & P CONSULTANTS, DESIGN CONTOURS TAKEN FROM ROAD DESIGN PLANS BY FLOWERS & ASSOCIATES, AERIAL PHOTOGRAMMETRIC TOPOGRAPHIC DATE BY

HORIZONTAL DATUM FOR THIS SURVEY IS THE CALIFORNIA COORDINATE SYSTEM OF 1983, ZONE 5 (CCS83, ZONE 5). VERTICAL DATUM FOR THIS SURVEY IS THE NORTH GEODETIC VERTICAL DATUM OF 1929 (NGVD29)

EASEMENTS:

- 18

18

18

18

EASEMENTS FOR INGRESS, EGRESS, PRIVATE ROADWAY, LANDSCAPING, DRAINAGE, PUBLIC AND PRIVATE UTILITIES, PRIVATE TRAILS, AGRICULTURE, NATURAL CONSERVATION, AND INCIDENTAL PURPOSES AS DECLARED BY RMA PARTNERS V, LLC, et al. PER DOCUMENT RECORDED MAY 10, 2005 AS INSTRUMENT No. 2005-0043388 AND AMENDED BY DOCUMENTS RECORDED JUNE 17, 2005 AS INSTRUMENT No. 2005-0057183, JULY 15, 2005 AS INSTRUMENT No. 2005-0066653, JUNE 15, 2007 AS INSTRUMENT No. 2007-0044624, AUGUST 3, 2007 AS INSTRUMENT No. 2007-0057084, APRIL 1, 2009 AS INSTRUMENT No. 2009-0017848, NOVEMBER 2, 2010 AS INSTRUMENT No. 2010-0061528 AND JANUARY 10, 2012 AS INSTRUMENT No. 2012-0003209, ALL OF OFFICIAL RECORDS.
- 19

19

VARIABLE WIDTH EASEMENTS FOR INGRESS, EGRESS, PRIVATE ROADWAY, LANDSCAPING, DRAINAGE, PUBLIC AND PRIVATE UTILITIES, PRIVATE TRAILS AND INCIDENTAL PURPOSES AS GRANTED TO RANCHO MONTE ALEGRE OWNERS' ASSOCIATION PER DOCUMENT RECORDED JUNE 17, 2005 AS INSTRUMENT No. 2005-0057184 AND AMENDED BY DOCUMENT RECORDED MARCH 22, 2006 AS INSTRUMENT No. 2006-0022479, BOTH OF OFFICIAL RECORDS.
- 20

20

VARIABLE WIDTH EASEMENTS FOR AGRICULTURE AND NATURAL RESOURCE CONSERVATION PURPOSES AS GRANTED TO THE LAND TRUST FOR SANTA BARBARA COUNTY PER DOCUMENT RECORDED JULY 8, 2005 AS INSTRUMENT No. 2005-0064897 AND AMENDED BY DOCUMENTS RECORDED MAY 29, 2007 AS INSTRUMENT No. 2007-00039473 AND SEPTEMBER 18, 2008 AS INSTRUMENT No. 2008-0054646, ALL OF OFFICIAL RECORDS.
- 23

23

A FIFTY (50.00) FOOT, FORTY (40.00) FOOT AND VARIABLE WIDTH EASEMENT TOGETHER WITH A ONE-HUNDRED FIFTY (150.00) FOOT TEMPORARY CONSTRUCTION EASEMENT FOR PIPELINE, INCIDENTAL AND RIGHT OF WAY PURPOSES AS GRANTED TO THE CARPINTERIA VALLEY WATER DISTRICT PER DOCUMENT RECORDED MARCH 24, 2008 AS INSTRUMENT No. 2008-0016372 OF OFFICIAL RECORDS.
- 25A

25A

A FIFTY (50.00) FOOT AND VARIABLE WIDTH EASEMENT TOGETHER WITH A ONE-HUNDRED FIFTY (150.00) FOOT TEMPORARY CONSTRUCTION EASEMENT FOR INGRESS, EGRESS, PRIVATE ROADWAY, LANDSCAPING, DRAINAGE, PUBLIC AND PRIVATE UTILITIES, PRIVATE TRAIL, AND PURPOSES INCIDENTAL THERETO AS GRANTED TO RANCHO MONTE ALEGRE OWNER'S ASSOCIATION PER DOCUMENT RECORDED MARCH 26, 2008 AS INSTRUMENT No. 2008-0017010 OF OFFICIAL RECORDS.
- 26

26

VARIABLE WIDTH EASEMENT FOR ROAD, BRIDGE, STORM DRAIN, DETENTION BASIN, PUMP STATION, AND ACCESSORY PURPOSES AS GRANTED TO RANCHO MONTE ALEGRE OWNER'S ASSOCIATION PER DOCUMENT RECORDED MARCH 27, 2009 AS INSTRUMENT No. 2009-0016820 OF OFFICIAL RECORDS.
- 27

27

EASEMENTS FOR PUBLIC UTILITY PURPOSES AS GRANTED TO SOUTHERN CALIFORNIA EDISON BY A DEED RECORDED MAY 19, 2015 AS INSTRUMENT No. 2015-0025735 OF OFFICIAL RECORDS.

LEGEND:

- SUBJECT PROPERTY BOUNDARY LINE

---

APN BOUNDARY LINE

---

EASEMENT BOUNDARY LINE

---

EASEMENT BOUNDARY LINE
- 18

18

- DEVELOPMENT ENVELOPE
- 18

18

- AGRICULTURAL DEVELOPMENT ENVELOPE
- 20

20

- AGRICULTURAL USE EASEMENT ENVELOPE
- 20

20

- CONSERVATION EASEMENT ENVELOPE

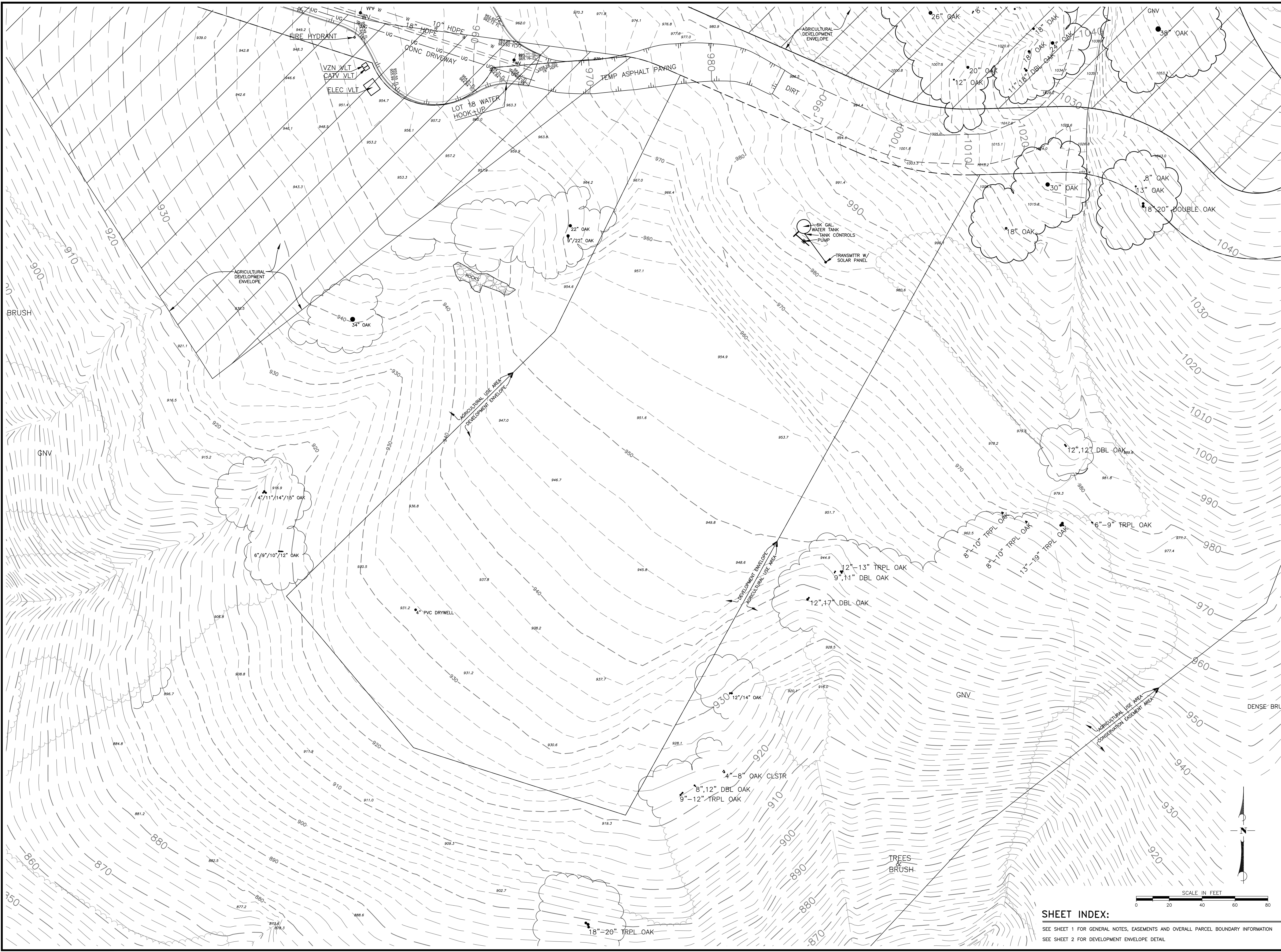
---

EXISTING CONCRETE PAVED ACCESS ROAD

SHEET INDEX:

- SEE SHEET 1 FOR GENERAL NOTES, EASEMENTS AND OVERALL PARCEL BOUNDARY INFORMATION
- SEE SHEET 2 FOR DEVELOPMENT ENVELOPE DETAIL





**SHEET INDEX:**  
SEE SHEET 1 FOR GENERAL NOTES, EASEMENTS AND OVERALL PARCEL BOUNDARY INFORMATION  
SEE SHEET 2 FOR DEVELOPMENT ENVELOPE DETAIL

<b>PROJECT NO.</b> 19-011.01	<b>DRAWING NAME:</b> SHEET 2	<b>DATE:</b> AUGUST 2019
<b>BOUNDARY &amp; TOPOGRAPHIC SURVEY</b> <b>RANCHO MONTE ALEGRE LOT 18</b> <b>APN 155-170-087 &amp; PORTION OF 155-170-088</b> <b>COUNTY OF SANTA BARBARA</b>		
<b>CLIENT:</b> 3 WEST CARRILLO STREET SUITE 205 SANTA BARBARA, CA 93101 (805) 962-4611 (PHONE) (805) 962-4161 (FAX)	<b>ATTN:</b>	