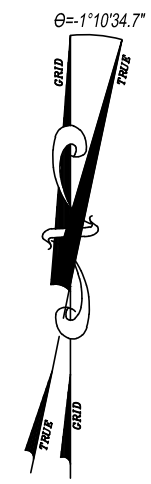
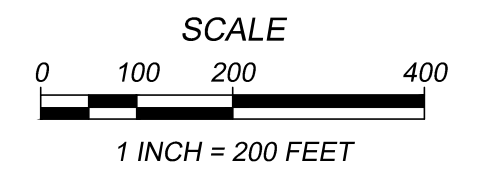
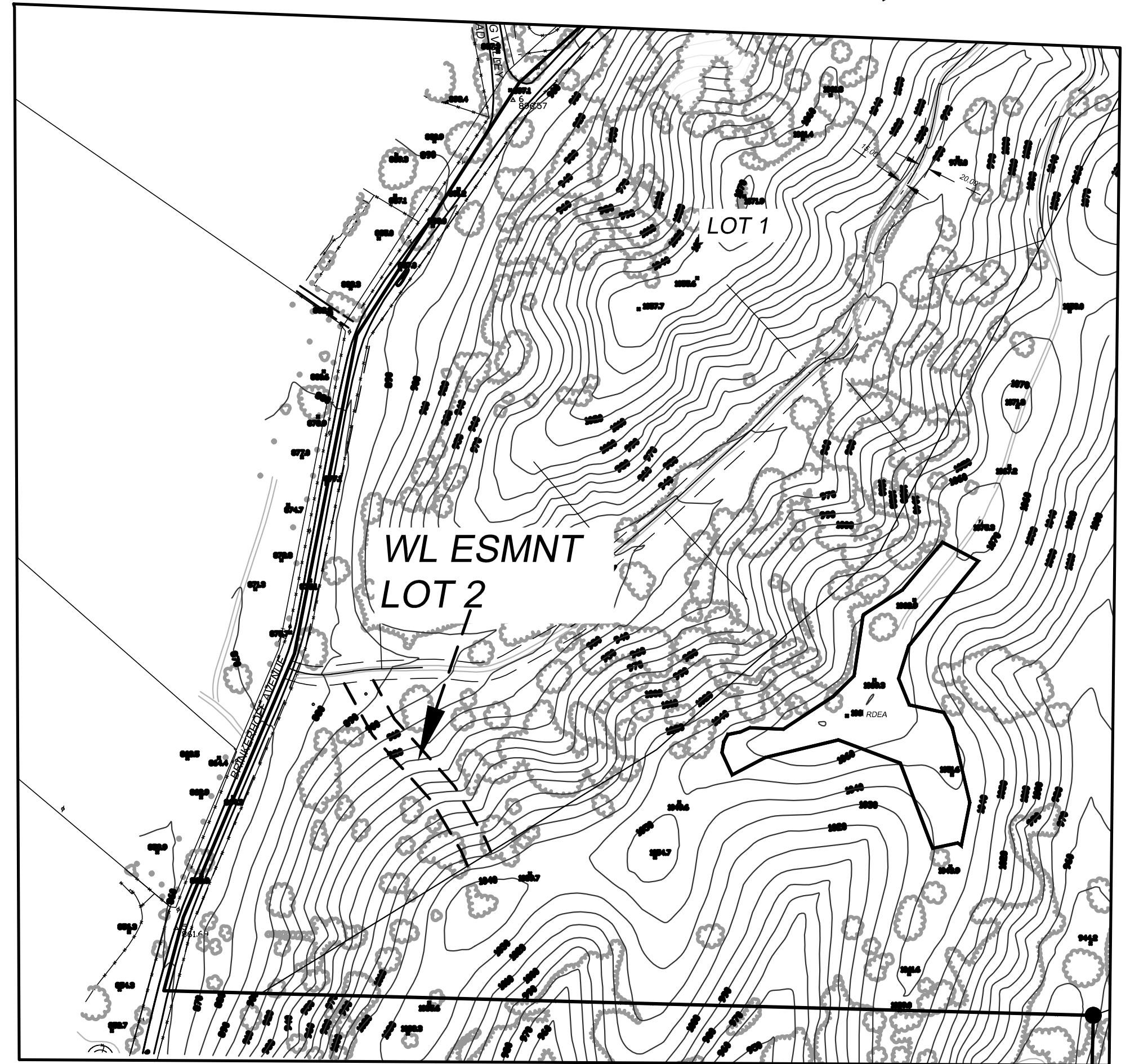
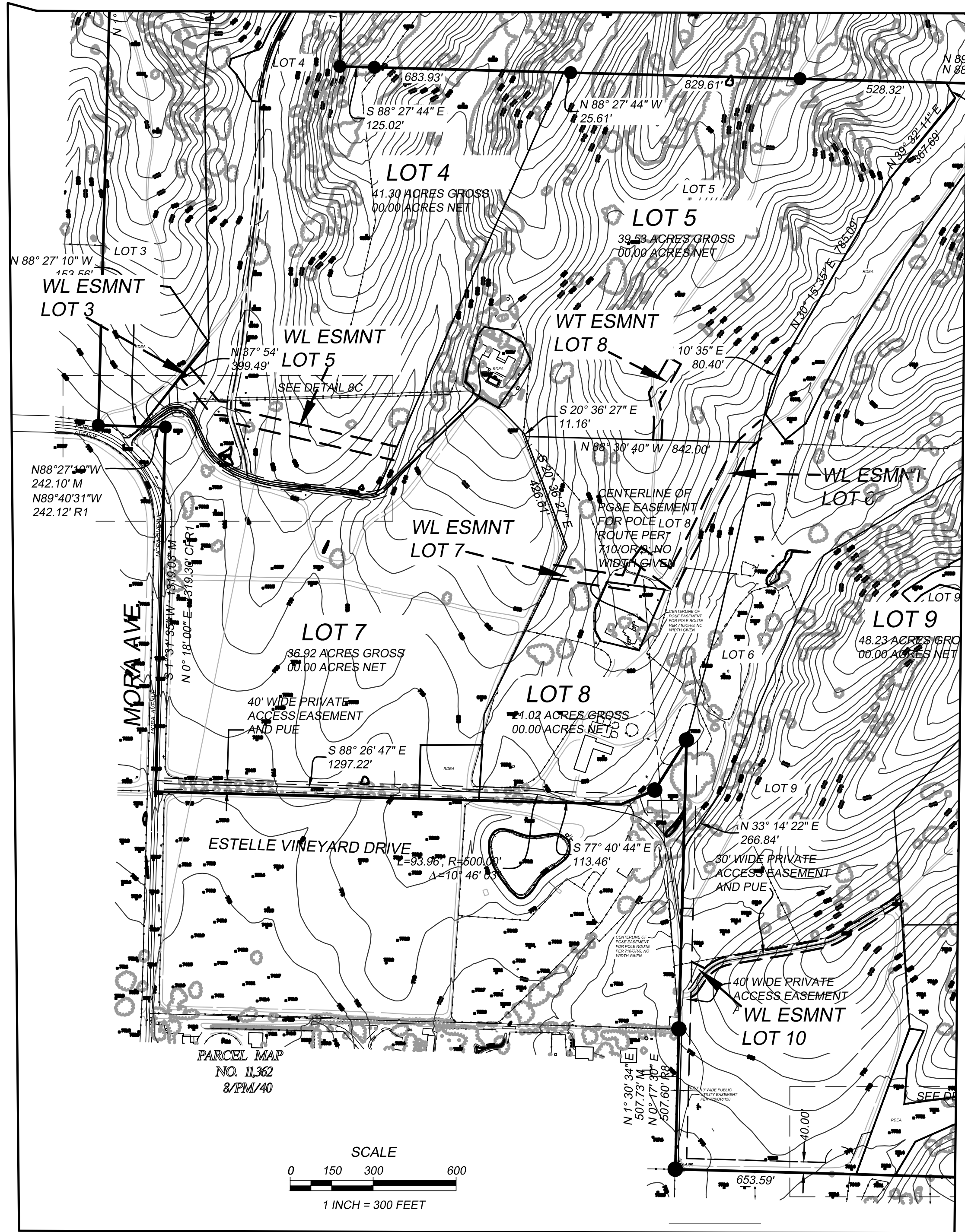


PROPOSED WATERWELL AND WATERLINE
EASEMENTS

**ESTELLE
VINEYARD ESTATES
TRACT 14,749**



WALLACE GROUP

CIVIL ENGINEERING
CONSTRUCTION MANAGEMENT
LANDSCAPE ARCHITECTURE
MECHANICAL ENGINEERING
PLANNING
PUBLIC WORKS ADMINISTRATION
SURVEYING / GIS SOLUTIONS
WATER RESOURCES
WALLACE SWANSON INTERNATIONAL

612 CLARION COURT
SAN LUIS OBISPO, CA 93401
T 805 544-4011 F 805 544-4294
www.wallacegroup.us